

Participation &
Enthusiasm

Excellence

Respect &
Responsibility

Success

Innovation &
Creativity

Safety

Teamwork &
Leadership

ROOTY HILL HIGH SCHOOL

Year 7

Parent Handbook 2023



WELCOME TO ROOTY HILL HIGH SCHOOL

Dear Parents and Caregivers

Congratulations on enrolling your son or daughter for Year 7 at Rooty Hill High School.

As you already know from the enrolment interview we offer a high level of personalised support to students and parents.

In this community we know many parents and caregivers have busy lives – working, caring for family members, coaching their children's sporting teams and just coping with the many challenges of raising teenagers.

Most of our parents (over the very long history of the school) have done a great job raising their own children and we see that at Year 12 Graduation every year.

Our job is to focus on providing every student with the opportunity to do his or her best at school – in academic studies, school service, the arts and sport.

Our job is to understand the learning, social, emotional and physical needs of individual students and to support them from childhood to adulthood and life beyond school.

We focus on students learning to know, to do, to be, to live together and to live sustainably in a high technology learning environment. We want to do more than graduate students with life and career options – we want our students to live the school's values (*PERSIST*) and be great citizens who can contribute to their community.

To do this, we know our job is also to provide a personalised service to individual parents and families when they need it.

Increasingly we are meeting positively and proactively with parents to discuss a wide range of issues that affect families and students. We are also offering more targeted opportunities for parents to be involved in the school – in the ways they want.

So, please contact us.

Our senior staff, our year advisers, our teachers and our administrative staff always try to put parent questions first and to get back to parents as soon as they can. Our teachers will also contact you.

For individual enquiries, the fastest way to contact us is by phone during school hours. After hours please leave a message and we will get back to you as soon as we can. You can also contact us by email (see page 2).

For general information and notices, please like our Facebook page. You can also look at the website, read our newsletter Missing Link (now online at - <https://issuu.com/rootyhill>) or follow us on Twitter and Instagram @RootyHillHS.

We do hope you will come to assemblies, events and sporting carnivals if you have the time.

We know that parents and caregivers who make time and show interest in their high school age children add considerably to the success of their children as adults.

We look forward to working with you in the coming years.

Christine Cawsey AM
Principal Rooty Hill High School
Learning, Leadership, Achievement

IT'S AS SIMPLE AS A – E

- A** – Attend class
- B** – Behave in a positive way
- C** – Complete all work
- D** – Dress in uniform everyday
- E** – Expect to do your best

CONTENTS

Contact Information	2
School Community Charter	3
PERSIST	5
Raising Responsibility Scheme	6
Uniform & Uniform Shop	7
Lesson Times & School Travel (Opal Cards)	8
Attendance & Injury/Illness at School	9 -11
Asthma, Allergies, Anaphylaxis & Vaccinations	12
Mobile Phones & Yondr	13
Successful Starters, Social Curriculum & Capable Learners	14
Personalised Learning	15
Assessments & Reporting	16
Subject and School Costs	17
BYOD (Bring Your Own Device)	18
School Canteen	19

CONTACT INFORMATION

Rooty Hill High School

Address:	North Parade, Rooty Hill 2766
Postal Address:	PO Box 70, Rooty Hill 2766
Phone:	(02) 9625 8104
Office Hours:	8:00am – 3:30pm (or by appointment)
Email:	rootyhill-h.school@det.nsw.edu.au
Website:	https://rootyhill-h.schools.nsw.gov.au/
Facebook:	facebook.com/rootyhillhs
Instagram & Twitter:	@rootyhillhs
YouTube:	youtube.com/user/rootyhillhighschool

CONTACTS

Principal	Ms Christine Cawsey AM
Deputy Principal - Year 7 2023	Ms Caroline (Thelma) Vuki
Other Deputy Principals	Ms Conny Mattimore Mr John Meng

Welfare Team

Head Teacher Junior School	Ms Sarah Andrews
Year Adviser - Year 7 2023	Ms Daynah Elford
Counsellor	Ms Isabella Miles

School Community Charter

 **Collaborative. Respectful. Communication.**

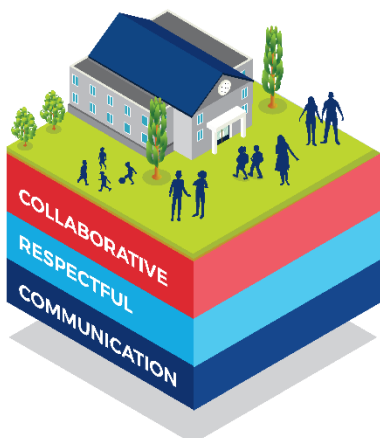
The following School Community Charter outlines the responsibilities of parents, carers, educators and school staff in NSW public schools to ensure our learning environments are collaborative, supportive and cohesive.

What our schools provide

NSW public schools work to create positive environments for students, staff and the entire school community that support student learning. We strive to ensure that every student is known, valued and cared for.

The best education happens when parents and schools work together.

The School Community Charter aligns with the NSW Department of Education Strategic Plan 2018 – 2022.



Positive environments

It is important that our NSW public schools are positive environments and that parents and carers are kept informed of students' progress and school announcements.

Parents and carers can expect:

- To be welcomed into our schools to work in partnership to promote student learning.
- Communication from school staff will be timely, polite and informative.
- Professional relationships with school staff are based on transparency, honesty and mutual respect.
- To be treated fairly. Tolerance and understanding are promoted as we respect diversity.

We treat each other with **respect**

We **prioritise the wellbeing** of all students and staff

Unsafe behaviour is not acceptable in our schools

We work **together** with the school

Ensuring respectful learning environments for all members of NSW Public Schools communities.



We create
collaborative
learning
environments

We
all play
our part

We work
in partnership
to promote
student
learning

Communicating with our schools

Our staff will find a time to talk to you when they can give you their full attention. Please remember that while our staff are in class or dealing with other matters, they may not be available to answer your questions immediately.

Our schools and communities will make sure that written communication is appropriate, fair and easy to read. We encourage you to use email and social media appropriately to connect with your school and stay up-to-date with up-coming events in the school community.

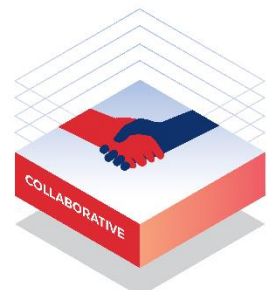
Our guide for parents, carers and students provides useful information about the complaints process:

education.nsw.gov.au/about-us/rights-and-accountability/complaints-compliments-and-suggestions/guide-for-parents-carers-and-students

Respectful communication is a right

In all workplaces people have the right to feel respected. Unacceptable and offensive behaviour has no place in our school communities.

To ensure the wellbeing of students, staff and the community in our schools, steps will be taken to address unacceptable behaviour. This may include restricting contact with the school community or, in more serious cases, referral to NSW Police.



Unacceptable behaviour may include but is not limited to:

- Aggressive or intimidating actions, such as violence, threatening gestures or physical proximity.
- Aggressive or intimidating language, including the use of obscenities, making sexist, racist or derogatory comments or using a rude tone.
- Treating members of the school community differently due to aspects such as their religion or disability.
- Inappropriate and time wasting communication.



Collaborative.
Respectful.
Communication.

School Community Charter

education.nsw.gov.au

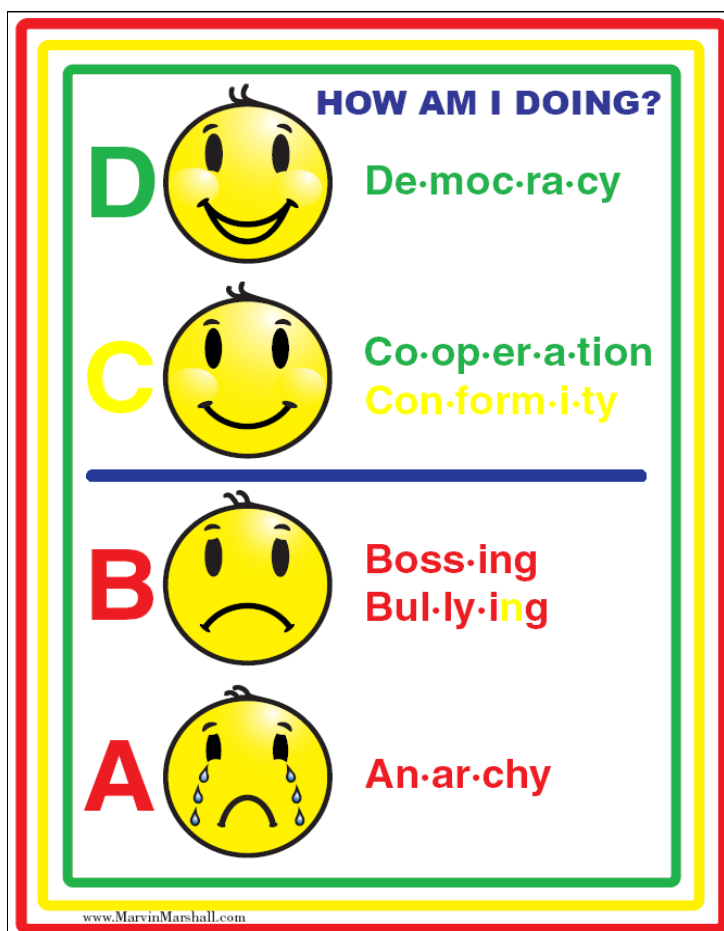
SCHOOL VALUES: PERSIST

When students start at the school, when parents view the school's website, when teachers issue reports and when students reflect on their behaviour, they do so using the school's values. At enrolment and then in class students learn about the school's values and learn how to demonstrate those values in their work, their behaviour, their relationships and their language.

P	PARTICIPATION & ENTHUSIASM This school fosters enthusiasm and school spirit in an environment that values the participation of students, staff, parents and the wider community. Are you actively involved in the life of the school?
E	EXCELLENCE Students and adults who support them are expected to do their best to achieve excellence. Have you done your best?
R	RESPECT & RESPONSIBILITY Students are expected to respect the rights of others, themselves and the school in an environment of harmony and personal responsibility. Do you respect yourself, respect others and take responsibility for your own actions?
S	SUCCESS Students, staff and parents work towards quality, success and recognition for themselves and the school. Can you evaluate your own performance?
I	INNOVATION & CREATIVITY Initiative and continuous improvement are expected for individuals, teams and the school. Can you find a better, smarter or more creative way?
S	SAFETY The school is committed to the safety and well being of all members of the school community. Have you made sure you and others are safe?
T	TEAMWORK & LEADERSHIP Individuals work together to create a harmonious, tolerant and effective school community. Have you been an asset to the team?

THE RAISING RESPONSIBILITY SCHEME

- Good behaviour, to make good choices and to take responsibility for their own actions.
- At Rooty Hill High School, the Raising Responsibility System (RRS - designed by Marvin Marshall) is used to develop effective practices and identify behaviour that is “above (or below) the line”. Good is above the line. Good choices are above the line. Taking personal responsibility
- In RRS discipline is defined as a quality held by students, staff and parents in managing their work, behaviour and lives. It is the lack of self-discipline that leads to poor choices and negative consequences.
- The role of the teachers, students and adults is to develop procedures and systems to help all students demonstrate cooperative and democratic behaviour – doing the right thing. It is also the role of teachers and adults to act when students are bossing, bullying or unable to control their own behaviours (anarchy). Students learn there are consequences when behaviour is “below the line.”
- Classroom procedures include the BBC (lesson outline tool), class codes for behaviour, class meetings, faculty documentation and assignment rubrics. School procedures are outlined below.
- All Year 7 students and new students who enrol are taught how to use the school’s values and the Raising Responsibility Scheme.
- If you would like a copy of the RRS chart for your “fridge” at home please ask.
- Please note – This school uses “Choice Theory and Reality Therapy” as its underpinning behavior management approach.



Above the line behaviours include:

- Presenting quality work
- Working well in a team
- Acting co-operatively and accepting difference
- Kindness
- Respect for self and others
- Taking responsibility
- Respect
- Politeness
- Helping others

Below the line behaviours include:

- Bullying, cyber-bullying
- Misuse of social media
- Harming self or others
- Disrupting the learning of self and others
- Poor attendance, lateness and truancy
- Not completing assessment tasks
- Serious misbehaviour including verbal abuse, criminal behaviour, sexualised behaviour and dangerous behaviour

UNIFORM



ROOTY HILL HIGH SCHOOL



Junior Summer Uniform

Junior Winter Uniform

Senior Summer Uniform

Senior Winter Uniform

Sports Uniform



Acceptable Shoes

for safety reasons, facial piercings
(lips, nose, eyebrows) are NOT suitable
for school

UNIFORM SHOP



Rooty Hill High School Uniform Shop

Price List

New Prices effective as of the 1st July 2022

Item	Price
Senior Girls Blouse	\$34.00
Junior Skirt	\$40.00
Senior Skirt	\$48.50
Senior Boys Shirt	\$34.00
Senior Boys Trousers Beltloop	\$40.00
Junior Polo	\$32.00
Senior Polo	\$32.00
Fleecy Jacket	\$45.00
Microfibre Jacket	\$70.00
Summer Shorts	\$32.00
Wool Jumper	\$73.00
Trackpants	\$45.00
Sports Polo	\$38.00

The Uniform Shop at Rooty Hill High School is operated by Daylight Schoolwear.

Normal operating hours
during the school term:

Monday	8:30 - 10:30am
Tuesday	8:30 - 10:30am
Wednesday	8:30 - 10:30am
Thursday	8:30 - 10:30am

Onsite shop contact (during operating hours): 0420 979 832

Onsite shop email:
rootyhill@daylightcorp.com

Head Office contact: 02 4648 1066

PURCHASE ONLINE:

<https://daylightsportswear.com/rootyhill/>

MASTERCARD VISA EFTPOS AVAILABLE, CHEQUES NOT ACCEPTED. NO LAYBY.

* Prices are subject to change without notice

LESSON TIMES – YEARS 7 - 10

Period 1	8:40am – 9:55am
Recess 1	9:55am – 10:15am
Period 2	10:15am – 11:30am
Recess 2	11:30am – 11:45am
Period 3	11:45am – 1:00pm
Lunch	1:00pm – 1:40pm
Period 4	1:40pm – 2:55pm

- Monday Week A students finish at 1:00pm.
- School gates closed between 9:00am – 2:30pm (except Monday A).

Whole school assembly:

- Summer Lesson Times (Terms 1 and 4) – After Period 1 Tuesday Week A and B
- Winter Lesson Times (Terms 2 and 3) – After Period 2 Tuesday Week A and B
- Assembly will be held in class on Microsoft Teams during COVID restrictions and exam periods. During COVID restrictions Week B Year group Google Meet.

SCHOOL STUDENT TRAVEL

<https://transportnsw.info/tickets-opal/ticket-eligibility-concessions/school-student-travel>

TYPES OF SCHOOL TRAVEL ASSISTANCE AVAILABLE

Different subsidies or passes are available depending on where you live and the availability of public transport.

SCHOOL OPAL CARD OR SCHOOL TRAVEL PASSES

Eligible students can receive free travel to and from home and school/TAFE on approved metro, train, bus, ferry and light rail during term. Please use the links below for more information:

- [Apply for a school travel pass or School Opal card](#)
- [Update a school travel pass](#)
- [Track your school travel pass application](#)
- [Lost, stolen or damaged School Opal cards and travel passes](#)
- [Request a review of school travel pass application](#)

TRAVEL OUTSIDE OF SCHOOL

When using public transport other than for school or for excursions, children aged 4 to 15 years are entitled to concession travel. Secondary students aged 16 years and over also pay concession fares with their proof of entitlement card. [Find out more.](#)

Why attendance matters

When your child misses school they miss important opportunities to...



Learn



Build friendships



Develop life skills

education.nsw.gov.au



Days missed = years lost

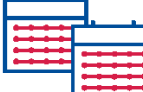
A day here and there doesn't seem like much, but...

When your child misses just...

they miss weeks per year

and years over their school life

1 day per fortnight  = **4** weeks  = Over **1** year missed

1 day per week  = **8** weeks  = Over **2.5** years missed


education.nsw.gov.au

Minutes lost = days lost per year

A couple of minutes here and there doesn't seem like much, but...

When your child misses just...

they miss days per year

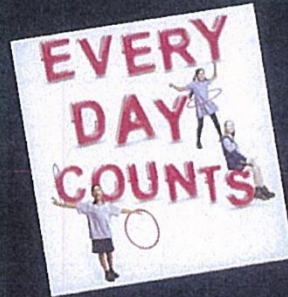
5 mins per day  = **3** days 

30 mins per day  = **18** days 



Patterns of lateness can have a serious impact on your child's education.

education.nsw.gov.au



100%

PERFECT

At school everyday!
You will achieve personal excellence



96%

GOOD

Equates to 8 school days off each year



94%

ON THE WAY

Equates to 12 school days off each year



90%

DANGER ZONE – EDUCATIONALLY AT RISK

Equates to 1 month off school each year



80%

EXTREME IMPACT

Equates to 2 months off each year



98%

IMPRESSIVE

Equates to 4 school days off each year



95%

NEARLY THERE

Equates to 10 school days off each year



92%

NEEDS TO IMPROVE

Equates to 16 days off each year



88%

SEVERE IMPACT

Equates to over a month off school each year



below 80%

DESTRUCTIVE

Highly challenging to access any learning

Based on 195 learning days per year

ATTENDANCE

Attendance is critical to success at school and Rooty Hill High School has a long record of student attendance at and above state, regional and local levels. The expected attendance is 95% (a maximum of 10 school days each year) and the minimum required attendance is **90%** of each school term. Failure to meet attendance requirements can affect student progression and the award of credentials. Key aspects of the attendance procedures include:

- There is no “roll call.” Rolls are marked at the beginning of every lesson. Morning classes start at 8:40am for students in Years 7-10.
- Parents and caregivers need to provide a note, or leave a message, if their son or daughter is going to be absent or late to school before school on that day.
- If students leave early they will be recorded as absent. Classes end by 2:55pm for students in Years 7-10.
- Where a family knows a student will be taking leave or seeking exemption (e.g. surgery), the application for leave must be done at least one week prior to the leave.
- If students will be absent for more than five days parents need to seek exemption for the absence. This includes extended illness, plans to travel and employment/work experience organised individually. Exemption is granted by the principal up to 50 days. Over 50 days the exemption must be approved by the School Director Educational Leadership. Exemptions are not automatically granted. Exemption application documents are available at the school office and on the school website.
- Parents and caregivers should make appointments outside hours. No student will be able to leave after the start of Period 4 (1:40pm) unless organised before 9:00am by parents/caregivers.
- The school uses SMS text messaging to advise parents if their sons or daughters are absent and to advise of variations to school routine that might affect attendance. Emergency messages are also sent by text.
- Lateness and truancy are “below the line” behaviours that have negative consequences. Parents and caregivers should note that poor attendance can result in students not meeting academic requirements. This can have serious consequences for students.
- Parents and caregivers who have a concern about the attendance of their sons or daughters should contact the Year Adviser and/or the Head Teacher Administration.
- **CONTACT:**
 - JUNIOR (Years 7 - 9) ATTENDANCE – 02 8805 3608
 - SENIOR (Years 10 - 12) ATTENDANCE – 02 8805 3609

INJURY / ILLNESS AT SCHOOL

- Students must stay at home if they are sick and if required, have a COVID test. Please advise the school.
- The school has no “clinic.” Sick students will be sent home under public health orders.
- If students feel sick enough to go home they:
 - Report to Student Services
 - Parents and caregivers will be contacted BY STAFF to make arrangements
 - Contact phone numbers must be UP TO DATE
 - If a student is injured, first aid will be given if the student has a minor injury
- In more serious injuries:
 - Parents and caregivers will be contacted and/or
 - Medical attention will be required and/or
 - An ambulance may be called.
- Serious student injuries are reported to Department of Education Health & Safety Hotline

ASTHMA, ALLERGIES AND ANAPHYLAXIS

Please take note of the following information that you are required to provide to Rooty Hill High School prior to your son or daughter attending.

If your child has asthma, you need a doctor to complete an ASTHMA PLAN – www.nationalasthma.org.au

Additionally, if your child has a diagnosed ALLERGY that is non-anaphylactic you will need to supply a current ACSIA ALLERGY PLAN (NON-ANAPHYLACTIC) to Rooty Hill High School. Also, to be completed and signed by a doctor – www.allergy.org.au

Anaphylaxis – it is essential that any student diagnosed with anaphylaxis MUST have a current ACSIA plan (completed and signed by a doctor) and MUST have 2 adrenaline autoinjectors (e.g. EpiPen) at school, one of which is to be left at school the other carried by the student. Please advise the school immediately if your child has anaphylaxis. www.allergy.org.au/anaphylaxis

YEAR 7 VACCINATIONS



Dear Parent/Guardian

Teams of specially trained registered nurses will be visiting your child's school during Year 7 to offer vaccinations against serious vaccine preventable diseases.

Vaccines include:

1. **Human Papillomavirus (HPV)** vaccine (2 dose schedule, given at least 6 months apart) – giving protection from 9 types of HPV
2. **Diphtheria-Tetanus-Pertussis (dTpa)** vaccine (1 dose) – a booster dose due at this age



What do you need to do?

- ✓ **Read the Year 7 Vaccination Information Kit** which will be distributed by your child's school at the beginning of the school year
- ✓ **Complete & sign the Consent Form** (make sure you sign for each vaccine your child requires)
- ✓ **Return the signed Consent Form** to your child to return to school, as soon as possible
- ✓ **Discuss the importance of vaccinations** with your child
- ✓ **Ensure your child has breakfast** on the morning of vaccination
- ✓ **If your child is absent from school on vaccination day** catch-up vaccinations will be provided at the next school clinic/s throughout the year

More questions?

Please contact Western Sydney Public Health Unit on **02 9840 3603** or visit:

- <https://www.health.nsw.gov.au/immunisation/Pages/schoolvaccination.aspx> for further information and translated copies of the Year 7 Vaccination Information Kit.
- <https://www.health.gov.au/resources/videos/getting-your-hpv-dtpa-vaccinations-at-school-what-to-expect> for video on what to expect on vaccination day.
- <https://www.wslhd.health.nsw.gov.au/ArticleDocuments/2440/Kick%20start%20high%20school%20with%208%20easy%20tips.pdf.aspx> for 8 easy health tips to kick start high school.

MOBILE PHONES

Rooty Hill High School is a mobile phone-free space. We believe that mobile phones have great utility however, a large percentage of negative incidents reported are mobile phone related. The use of mobile phones in school has caused significant disruption to teaching and learning, increased conflict amongst peers, increased wellbeing concerns and significantly increased the workload of staff managing student non-compliance with the existing policy.

As a solution we have implemented the Yondr Program. The Yondr Program utilises a simple, secure pouch that stores a phone. Every student will secure their phone in a personally assigned Yondr pouch when they arrive at school. Students will maintain possession of their phones and will not use them until their pouches are opened at the end of the school day. Students are required to bring their Yondr pouch to and from school each day and are responsible for their pouch at all times.

FREQUENTLY ASKED QUESTIONS

What if I want to reach my child during the school day?

We want our students to be engaged in their learning. If you need to contact your child during the school day, contact the school office at 02 96258104

What if there is a school emergency?

In case of a school emergency, we direct our students to safety first, following our school emergency response protocol.

Will my student's mobile phone be safe?

Students are in possession of their phones - in their Yondr pouches - for the entire school day. We will advise students to store the pouches in their school bags where it is completely safe.

What if the Yondr pouch gets damaged or a student uses their mobile phone during school time?

The Yondr pouch is property of Rooty Hill High School. If a student damages their Pouches or uses their mobile phones during school time, they will be referred to their relevant Deputy Principals.



POUCH

As a student enters school, they place their phone in their assigned Yondr pouch.



SECURE

The pouch is closed and secured. Each student keeps their pouch throughout the day.



EXIT

When leaving school, the student taps their pouch to an unlocking base to release their phone.

Note: Damage consists of any signs that the physical integrity of the pouch has been compromised, whether intentional or unintentional, as determined by the school or Yondr staff.

WE ARE SUCCESSFUL STARTERS

All incoming Year 7 students will take part in a peer mentor program. The program aims to encourage every Year 7 student to believe they can achieve and reach their goals at Rooty Hill High School.

The program:

- is a peer led, skills based practical learning program
- develops key skills in resilience, teamwork, decision making, problem solving and leadership
- provides students with a supportive learning environment in which to develop the skills, attitudes and strategies to improve their mental, social and emotional well-being
- empowers young people to support each other and contribute positively to school and society
- provides a forum where students are able to discuss important issues
- provide an awareness and respect of the similarities and differences in people

SOCIAL CURRICULUM

Rooty Hill is keen for all students to achieve their best – this can only be done if each person chooses quality behaviour, which will lead to the production of quality work and the development of quality relationships.

To promote positive mental health, the social curriculum (delivered through PDHPE lessons) provides opportunities for students to learn about “Raising Responsibility,” “Choice Theory” (see page 6) and wellbeing. They focus on understanding their strengths; building high expectations and resilience; developing strong communication and problem-solving skills and the importance of positive relationships and strong connections to success at school.

CAPABLE LEARNERS

At Rooty Hill High School we value all aspects of the curriculum including the development of student learning around the key capabilities that have been identified as essential for the successful transition beyond school in the 21st Century. These capabilities are embedded within the NSW Board of Studies syllabus documents for each KLA and include:

- Information and Communication Technology
- Critical and Creative Thinking
- Personal, Social and Ethical Understanding
- Difference and Diversity
- Work and Enterprise
- Civics, Citizenship and Sustainability
- Literacy and Numeracy

All teaching and learning programs at our school have the capabilities at the heart of all lessons, with students completing tasks that allow them to not only learn the content for each subject, but to also enable participation in learning experiences that help them to develop an ability to function in all aspects of school and beyond. We want all students to have the chance to participate in curricular, co-curricular and extra-curricular programs for their portfolios. Students will be encouraged in all subject areas to collect evidence of their abilities around the capabilities that will then be uploaded into the personalised Learning Hub that exists as part of the BYOD program.

PERSONALISED LEARNING

If students are to learn how to be successful adults who understand themselves and others, who can live and work with others and who can achieve their potential, the school has a mandate to provide opportunities for students to learn in a wide range of academic, emotional and social domains. The school has a focus on teaching both subject and ACARA capability knowledge skills (know-how), capabilities and dispositions.

At Rooty Hill High School each student:

- Has a structured personalised learning program in which every student has a personal learning plan and opportunities to reflect on their goals, achievements and plans at least once per semester.
- Sets a subject goal in each subject each semester, collects evidence from success criteria and writes a reflection on his/her academic reports.
- Will have a personalised academic plan and portfolio in each subject based on academic performance and expected progress from Year 7 to 12.
- Manages their own individual student digital portfolio.
- My Learning Hub – every student will have a digital portfolio on which they can load:
 - evidence of their work in each of the ACARA capabilities
 - their CV and personal statement
 - their personalised learning plans and
 - their merit, significant achievement and other awards
- Is supported through individual monitoring of attendance, completion of work, behaviour in class and behaviour in the playground.
- Can access the Learning Centre and have time allocated for customised learning.
- Participates in structured teaching of a social curriculum (through the PDHPE program) to learn about the school's key values and frameworks in participation, responsibility, safety and "Raising Responsibility".
- Will be invited and expected to participate in specific targeted programs for identified groups of students and for different year groups.
- Will have opportunities in student leadership, mentoring and mediation programs run by students for students, including the School Ambassador program for Years 7 – 9 and peer support.
- Will attend assemblies to celebrate learning including deputy principal assemblies in Terms 1 and 3 and report presentation assemblies at the end of Terms 2 and 4 for students in Years 7 – 10.
- Will experience whole school events and programs including Harmony in Diversity Day, Sustainability Day, practical learning week and Learning Neighbourhood events.
- Will have the benefit of our strong connections with the partner primary schools creating effective transitions from pre-school through to high school.

ASSESSMENT TASKS & ACADEMIC REQUIREMENTS

There are some keys to success at high school.

Attend – Students need to attend school every day and be in class.

Behave – They need to behave “above the line”

Complete and contribute – Students need to take an active part in their own learning and they need to complete all set homework and assessment tasks.

We have two main types of assessment in this school:

1. Subject based – grades issued
2. Capability based – progressive individual assessment using the success criteria from each lesson – self, peer and teacher

A special note about homework – most homework in this school is now online and parents and caregivers can see what is required (note: local libraries have wireless access) through each student’s Google account.

Homework is the chance to finish and consolidate work done at school and it is not necessarily set each day. This is different to assessment – where students need to take time to prepare and study.

All students benefit from learning how to manage their time and how to balance school home work with “Home” homework – helping with chores, learning how to shop and budget, and playing sports.

Parents should not do homework for their children – they should be supportive.

STUDENT AGENCY, STUDENT SELF-ASSESSMENT AND REPORTING

At this school every student needs to understand their own progress, growth and attainment. As they create and maintain their portfolios in #MyLearningHub, they learn to upload evidence (work samples) and annotate that evidence to show they can assess their progress against capability and subject benchmarks. At the end of each semester they use their subject based learning goals and their personal evidence portfolio to co-construct and write their own subject report comments which are then “validated” by the teacher.

Our school data and evidence shows that this helps students improve their results over time.

SCHOOL AND SUBJECT COSTS - YEAR 7

- The school has no general contribution – everything collected is spent to provide equipment and resources for students in each subject.
- Subject costs are tax deductible. They are donated through the school's Library Fund and cover the costs of all resources listed below.
- Subject costs are capped at \$200 per student per annum with a maximum of \$600 per family.
- Student assistance is available for families needing extra help and applications should be made through the office with a valid Centrelink Card or other supporting documents.
- All students who purchase and register a new BYO (Bring Your Own) device (computer) for use at school are exempt from subject costs for that year. Devices and licenses must be registered – please see the IT Staff Team.
- Years 7 – 11 subject costs and contributions need to be paid by the end of Term 3 to ensure students receive all items.
- Online payments can be made 24/7 through the school website by clicking on 'Make a payment' – <https://rootyhill-h.schools.nsw.gov.au/>
- Payments can also be made in person (from 8:30am – 1:30pm on school days) at Student Services.

Subject Costs for Year 7 - \$200

Subject costs including exercise books, workbooks and specific equipment for each subject	\$30
Visual Arts diary	\$10
Mandatory TAS consumables	\$30
SCHOOL-OWNED DEVICE (CHROMEBOOK) and technology costs One off non-refundable deposit for use of school Chromebooks in Years 7-9 to cover the cost of maintenance and minor repairs.	\$130
TOTAL	\$200

Please note: Students whose families purchase a device for students to use at school are exempt from subject costs.

Equipment such as aprons, maths kits and calculators are provided in class and will be kept at school.

Additional costs for students:

- Sport and carnivals
- Excursions
- Year 7 camp/excursion

BYOD (Bring Your Own Device) - YEAR 7

Students in Year 7 have the option to BYOD and some families may choose to do so. The student's device must be registered with the school before school starts in 2023.

Please Note: Students whose families purchase a BYO device will receive the equipment and books (included in the \$200 subject costs) at no extra cost.

Our students learn face to face and in an online digital curriculum. This includes software resources and tools designed to help students develop their skills and capabilities in all subjects through the use of ICT.

Each student who has a device receives:

1. Access to the Rooty Hill High School digital curriculum (Google Classroom).
2. Access to the Rooty Hill High School electronic portfolio (My Learning Hub).
3. Preparation for life and work with a full ICT BYOD (Bring Your Own Device) program subsidised by the school. The school subsidises the licence and software costs.

Please also read page 17 (subject contributions) and the full device policy on the school website – <https://rootyhill-h.schools.nsw.gov.au/>

MINIMUM DEVICE REQUIREMENTS AND SPECIFICATIONS

The device specifications identify the minimum system requirements/hardware specifications for students so that parents are fully informed about requirements. If you are unsure of any aspect of this specification document please contact RHHS.

Students who bring their own device with evidence of purchase do not pay subject and technology contributions in the year of purchasing the device.

Form Factor (Device Type)	Laptop or convertible device (<i>Tablet with detachable Keyboard</i>). Note: Must have a durable keyboard for day to day use.
Physical Dimensions	Minimum Screen Size: 10"
Operating System	Chrome OS (Chromebook) or Microsoft Windows 10.
Wireless Compatibility	The DEC wireless network installed in DEC high schools operates on certain Wi-Fi standards. For the device to connect to the network it must be labelled with 802.11a/b/g/n or 802.11ac dual band. Devices with only 802.11b/g or 802.11n 2.4GHz will not be able to connect to the internet.
Battery Life	Advertised battery life of at least 6 hours.
Additional Recommendations	<ul style="list-style-type: none">• Maximum weight: 2kg.• Accidental loss and breakage insurance and extended warranty. Note: <i>Insurance and warranty: Be aware of the terms of insurance policies/warranties for the device. The school will not accept responsibility for loss or breakage.</i>
Software	<ul style="list-style-type: none">• Access to Google Suite for Education through the RHHS Domain will be provided to all students.• Google Chrome Web Browser Note: <i>Chromebooks utilise a Google username and password to log in. Students will be issued with RHHS Domain username and password upon registering their device with the school.</i>
Security Software	Microsoft Windows 10 operating systems with the latest internet security and system updates. Note: <i>Google Chrome OS - no additional security software is required.</i>
Accessories	Carry case: Supply a carry case or plastic protective case to protect the device.
Hardware	<ul style="list-style-type: none">• Camera• Microphone• USB Ports
Ergonomics	Students should ensure they are comfortable using their device during the school day particularly in relation to screen size & sturdy keyboard.

The RHHS community supports the BYOD program for students in Years 7-12 who purchase a new device and provide evidence to the school. Please read the school's Device Policy at <https://rootyhill-h.schools.nsw.gov.au/>

CANTEEN

The canteen at Rooty Hill High School is operated by Healthy Canteens Australia. Below is a copy of the 2021 High School Canteen Menu. The canteen menu can also be found on their website <https://healthycanteens.com.au/canteen-menus/>

SANDWICHES

HAM & CHEESE E	\$3.5
HAM, CHEESE & TOMATO E	\$4.0
SWEET CHILLI CHICKEN LETTUCE, SWEET CHILLI MAYO E	\$4.5
CHICKEN, LETTUCE & MAYO E	\$4.5
CHEESE & TOMATO E	\$3.5
EGG & LETTUCE E	\$4.0
CURRIED EGG & LETTUCE E	\$4.0
TUNA LETTUCE, & MAYO E	\$4.0
SALAD LETTUCE, TOMATO, CARROT, CUCUMBER, BEETROOT E	\$4.5
CHICKEN, CHEESE & TOMATO E	\$4.5
CHICKEN CAESAR CHICKEN, LETTUCE, CAESAR DRESSING E	\$4.5
HAM SALAD LETTUCE, TOMATO, CARROT, CUCUMBER, BEETROOT E	\$4.5

WRAPS

SGL	DBL
SALAD LETTUCE, TOMATO, ONION, CARROT, CUCUMBER, BEET E	\$3.0 \$5.5
SWEET CHILLI CHICKEN LETTUCE, TOMATO, SWEET CHILLI E	\$3.0 \$6.0
CHICKEN, LETTUCE & MAYO SPRING ONION E	\$3.0 \$6.0
CHICKEN CAESAR CHICKEN, LETTUCE, EGG, CHEESE, CROUTON E	\$3.5 \$6.5
HAM SALAD LETTUCE, TOMATO, ONION, CARROT, CUC, BEET E	\$3.5 \$6.5

SALADS

WATERMELON WATERMELON CHUNKS E	\$4.5
FRUIT FRESH SEASONAL FRUITS E	\$5.0
SWEET CHILLI CHICKEN LETTUCE, TOMATO, SWEET CHILLI E	\$6.0
CHICKEN CAESAR CHICKEN, COS, EGG, CROUTONS, CHEESE E	\$6.0
GARDEN LETTUCE, TOMATO, CAPSICUM, CARROT, BEET ROOT E	\$5.0
CAESAR COS LETTUCE, EGG, CROUTONS, CHEESE E	\$5.0
CREAMY CHICKEN PASTA E	\$5.0
PERI PERI CHICKEN SALAD E	\$6.0
HAM SALAD E	\$6.0
CHICKEN SALAD E	\$6.0

CRUNCHY BREAD ROLLS

SALAD E	\$5.0
SWEET CHILLI CHICKEN 2X TENDERS, LETTUCE, SWEET CHILLI MAYO E	\$6.0
HOT CHICKEN & GRAVY E	\$6.0
CHICKEN, LETTUCE & MAYO E	\$6.0
PERI PERI CHICKEN SALAD E	\$6.0
HAM SALAD E	\$6.0
HOT N SPICY CHICKEN SCHNITZEL WITH LETTUCE & MAYO E	\$6.0

SUSHI ROLLS

TERNYAKI CHICKEN E	\$4.0
VEGETARIAN E	\$4.0
TUNA E	\$4.0

RICE PAPER ROLLS

TERNYAKI CHICKEN WITH LETTUCE & CUCUMBER E	\$5.5
SWEET CHILLI CHICKEN LETTUCE, CARROT, CUC, SWEET CHILLI E	\$5.5
VEGETARIAN LETTUCE, CARROT, CUCUMBER, TOMATO E	\$5.5

DRINKS

POPPER JUICE 250ML E	\$2.0
WATER 600ML E	\$2.5
GLUE 250ML E	\$2.6
OAK MILK 300ML E	\$2.5
OAK MILK 500ML E	\$4.5
ALOE VERA 500ML E	\$4.0
ICE TEA 500ML E	\$4.0
PUMP WATER 750ML E	\$4.0
PUMP FLAVOURS 750ML E	\$4.5
UP N GO 250ML E	\$3.0
HOT CHOCOLATE E	\$2.5
MINERAL WATER 475ML E	\$3.5
ICE BREAK COFFEE 500ML E	\$4.5
SOFT DRINK 375ML NO SUGAR O	\$2.9
POWERADE 600ML NO SUGAR O	\$4.5
SOFT DRINK 600ML NO SUGAR O	\$4.5

BREAKFAST BEFORE 9:30AM

COLD & FRESH

SEASONAL FRUIT E	\$1.2
WATERMELON BOWL WATERMELON CHUNKS E	\$4.5
FRUIT SALAD FRESH SEASONAL FRUITS E	\$5.0
YOGHURT E	\$3.5
MUFFINS HOMEMADE ASSORTED FLAVOURS O	\$2.0

HOT FOOD

HASH BROWN O	\$1.5
CHEESE WRAP TOASTED E	\$3.0
HAM & CHEESE WRAP TOASTED E	\$3.5
HAM, CHEESE & TOMATO WRAP TOASTED E	\$4.0
BACON & EGG ROLL WITH SAUCE O	\$4.5
TOASTED SANDWICHES ASSORTED SPECIALS DAILY E	\$3.5

FOOD CODING

E EVERYDAY RATED
O OCCASIONAL RATED
ALL ITEMS ARE HALAL
(EXCEPT PORK BASED PRODUCTS)

SNACKS

POPCORN	\$1.0
CHIPS 28GM	\$2.0
PIRANHA SNAPS	\$2.5

COLD

SNAP STIX ICE BLOCKS	\$1.0
FROZEN JUICE CUPS	\$1.5
ICE MONY	\$1.5
JELLY CUP	\$2.0
FROZEN MILKSHAKE	\$2.5

SWEET

BROWNIE	\$1.0
PIKELET	\$1.0
BANANA BREAD	\$2.5

FEBRUARY

Foods Of Asia

MARCH

Salad Sensations

MAY

HCA Gives You Wings

JUNE

Jumbo Baked Potato

JULY

Homemade Lasagna

AUGUST

Made In America

SEPTEMBER

Mexican

OCTOBER

Italian Favourites

NOVEMBER

Greek Souvlaki

DECEMBER

Wrap Up The Year

HOT BITES

HOT & SPICY CHICKEN WINGS E	EACH	\$1.5
	x4	\$5.0
CHICKEN TENDERS SWEET CHILLI CHICKEN E		\$2.0
GARLIC BREAD LOAF E		\$2.5
CUP OF NOODLES BEEF, CHICKEN, VEGETARIAN O		\$3.5
CHICKEN BREAST NUGGETS O	x6	\$4.0
HOT DOG WITH SAUCE (CHICKEN) O		\$3.5
POTATO WEDGES WITH SAUCE O		\$4.0

NACHOS

BEEF BEEF MINCE WITH CHEESE - SOUR CREAM SOC O	\$5.0
VEGETARIAN SALSA, LETTUCE, CHEESE - SOUR CREAM SOC O	\$5.0
THE LOT BEEF MINCE, LETTUCE, TOMATO, CHEESE, SOUR CREAM O	\$6.5

PASTRIES

SAUSAGE ROLL	\$3.8
MEAT PIE	\$4.5
POTATO PIE POTATO & BEEF	\$4.8

RICE - PASTA - NOODLES

DAILY	REG	LGE
BUTTER CHICKEN OUR FAMOUS RECIPE & RICE E	\$4.0	\$6.0
PASTA BOLOGNESE RICH BEEF SAUCE E	\$4.0	\$6.0
FETTUCINE CARBONARA WITH CHICKEN E	\$4.0	\$6.0
BEEF LASAGNA HOMEMADE BEEF E		\$6.5
PRE ORDER	REG	LGE
TERIYAKI CHICKEN STIR FRY WITH RICE E	\$6.0	\$6.0
CURRY CHICKEN WITH RICE E	\$6.0	\$6.0
FRIED RICE E	\$4.0	\$6.0
ROASTED VEGETABLES PASTA FRESH TOMATO SAUCE E		\$6.0
VEGETARIAN LASAGNA GLUTEN FREE E	\$5.2	



NO FEES

\$2
MINIMUM
PURCHASE

BURGERS

CHICKEN BURGER WITH LETTUCE & MAYO E	\$5.0
CHICKEN & CHEESE BURGER WITH YOUR CHOICE OF SAUCE E	\$5.0
HOT N SPICY CHICKEN BURGER DEVIL FILLET & LETTUCE E	\$5.5
CHEESE BURGER BEEF, CHEESE, TOMATO SAUCE E	\$5.5
AUSSIE BURGER BEEF, LETTUCE, TOMATO, BEETROOT, BBQ SAUCE E	\$5.5
VEGETARIAN BURGER PREMIUM VEGETABLE PATTIE & SALAD E	\$5.5

TOASTED WRAPS

SWEET CHILLI CHICKEN WITH CHEESE E	\$5.0
BBQ CHICKEN & CHEESE WITH BBQ SAUCE E	\$5.0
MEXICAN SPICY CHICKEN WITH CHEESE E	\$5.0

HOMEMADE PIZZA

CHEESE WITH FRESH TOMATO PIZZA SAUCE E	\$4.0
HAM & CHEESE WITH FRESH TOMATO PIZZA SAUCE E	\$5.0
HAM & PINEAPPLE WITH CHEESE & FRESH TOMATO PIZZA SAUCE E	\$5.0
BBQ CHICKEN WITH BBQ SAUCE E	\$5.0

* BBQ SAUCE AVAILABLE ON ALL PIZZAS BY REQUEST

GLUTEN FREE OPTIONS

RICE - PASTA - NACHOS

REG	LGE
BUTTER CHICKEN OUR FAMOUS RECIPE & RICE	\$4.0 \$6.0
PASTA BOLOGNESE RICH BEEF SAUCE	\$4.0 \$6.0
LASAGNA VEGETARIAN	\$5.2
NACHOS BEEF OR VEGETARIAN	\$5.5

WRAP-SANDWICH-SALAD-BURGER

ANY WRAP GLUTEN FREE WRAP + FILLINGS	\$6.0
ANY SANDWICH GF BREAD - ADD SOC TO REGULAR PRICE	FROM \$4.0
ANY SALAD GLUTEN FREE DRESSINGS + TOPPINGS	\$6.0

DONER KEBABS

DONER KEBAB & CHEESE E WITH BBQ SAUCE	\$6.5
DONER KEBAB & SALAD E LETTUCE, TOMATO, ONION CHEESE + SOC	\$7.5

SNACK PACKS

DONER KEBAB MEAT E WITH SALAD OR WEDGES CHEESE + \$1	\$8.0
--	-------



Welcome Year 7 2023

#classof2028